

CERTIFICATE OF LOCATION OF GOVERNMENT CORNER

North 1/4 Corner of Section 33, Township 108N, Range 43W, 5th P.M.

STATE OF MINNESOTA, County of Murray

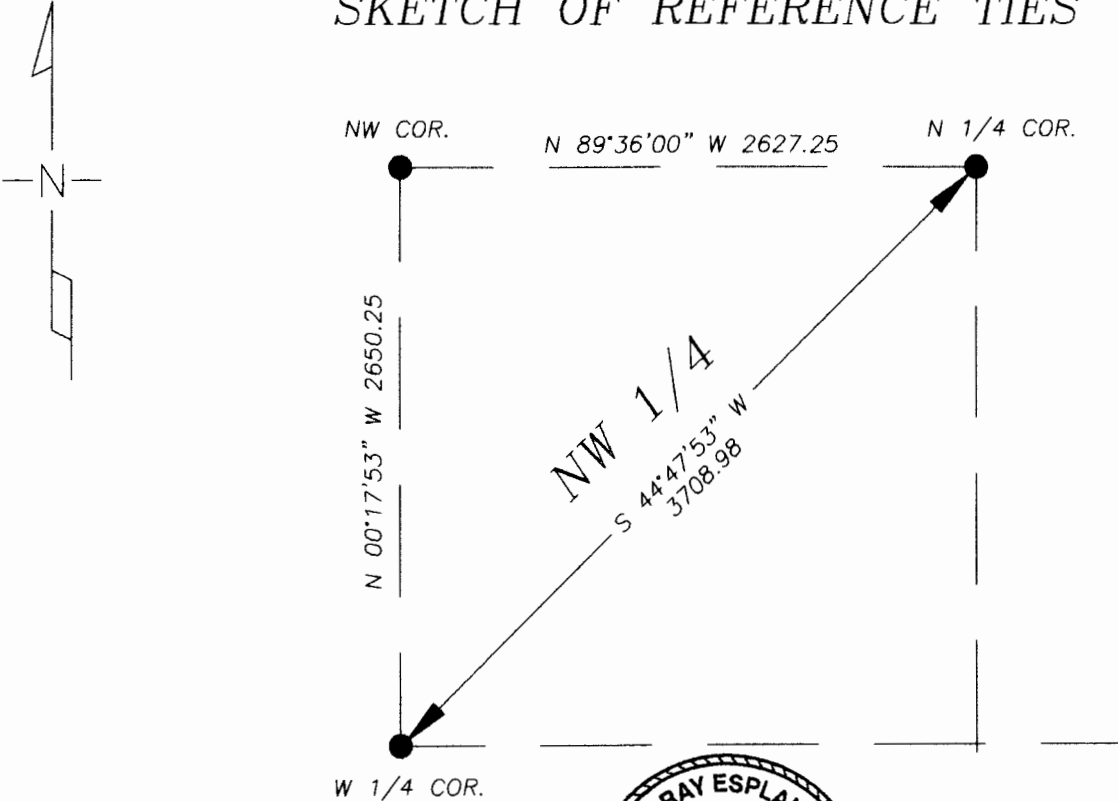
the corner location shown on the sketch

On 11/08/05 found a 10" X 14" stone 4.6 feet deep. Murray County Highway Dept. had no history on this corner.

left monument as found lowered monument, removed monument (explain)

On 11/08/05 placed a 1" iron pipe with red survey cap #43803 over top of stone.

SKETCH OF REFERENCE TIES



I hereby certify that this document and the data contained herein was prepared by me or under my direct supervision.

Dennis Ray Esplan 11/09/05
SIGNATURE DATE

N. LICENSE NO. 43803

Land Surveyor, Professional Engineer

County Surveyor, County Engineer

OFFICE OF THE COUNTY RECORDER

I hereby certify that this document was filed in the Co. Recorder's Office at _____ on the

_____ day of _____

County Recorder _____

By _____, Deputy

DOCUMENT NO. _____